

Microsoft Live



AUDIENCE

Teachers and students viewing videos on the EnhanceTV website.



PURPOSE

To sign in to EnhanceTV website using Microsoft Live user account.

1. Go to the EnhanceTV website <https://www.enhancetv.com.au/>
2. Click **Sign In** on the top right of the screen.

enhance TV Sign in

Home TV Programs Community Clips Search

Sign in options

Username or email

Password [Forgot your password?](#)

Remember me

or sign in with

Microsoft Google

CEnet NSW Education

or sign in with

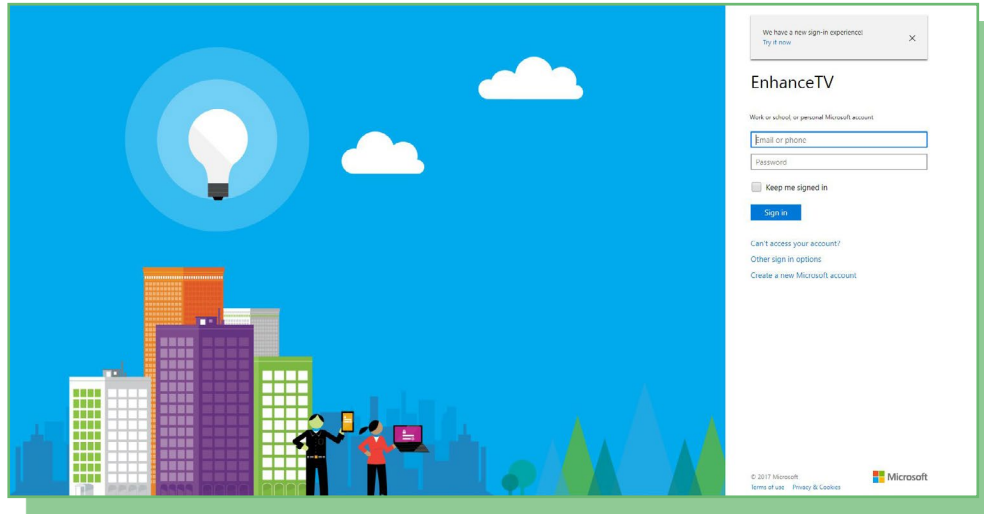
Supported single sign on email

(<https://stag-fe.enhancetv.com.au/>) - <https://www.enhancetv.com.au/login>

3. Click on the **Sign in with Microsoft Live** button



The login page displays.

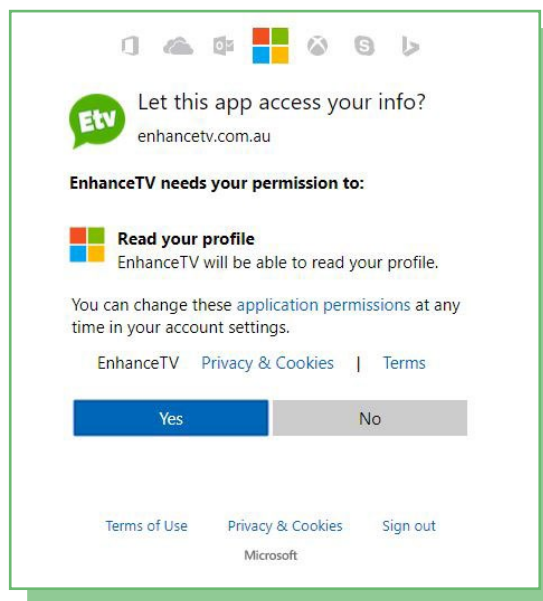


4. Enter your Microsoft Live account details and click **Sign In**.

5. Is this your first logging in to EnhanceTV with your Microsoft account?

- **IF NO:** You will be redirected back to the EnhanceTV website.
- **IF YES:** You will be prompted to authorise the login.

6. Click **Yes** to allow EnhanceTV to read your profile.



You will be redirected back to the EnhanceTV website.

NOTE: Your Microsoft email address must be the same as the email in your EnhanceTV account



These documents are provided as a helpful guide only. Enhance TV is not responsible for the accuracy or completeness of the content within the documents or any issues arising from the application of the instructions provided. Users are advised to seek their own technical assistance from qualified experts. To the best of our knowledge the documents are accurate at the time of writing. EnhanceTV will not be responsible for the accuracy of the content within the documents or any issues arising from implementing the instructions.